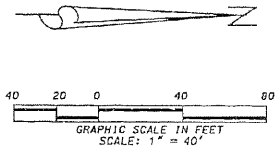
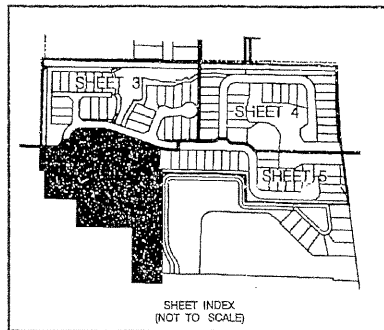


PROSPERITY HARBOR NORTH P.U.D.

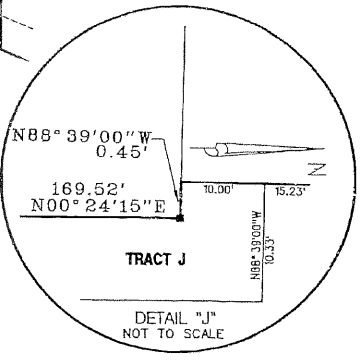
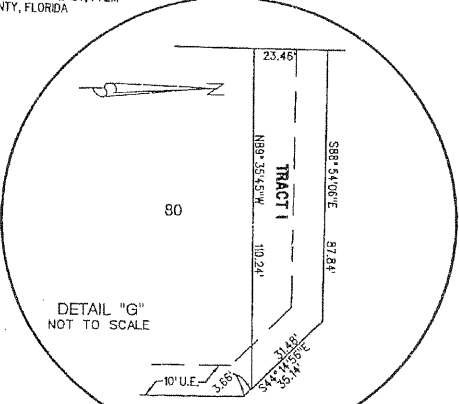
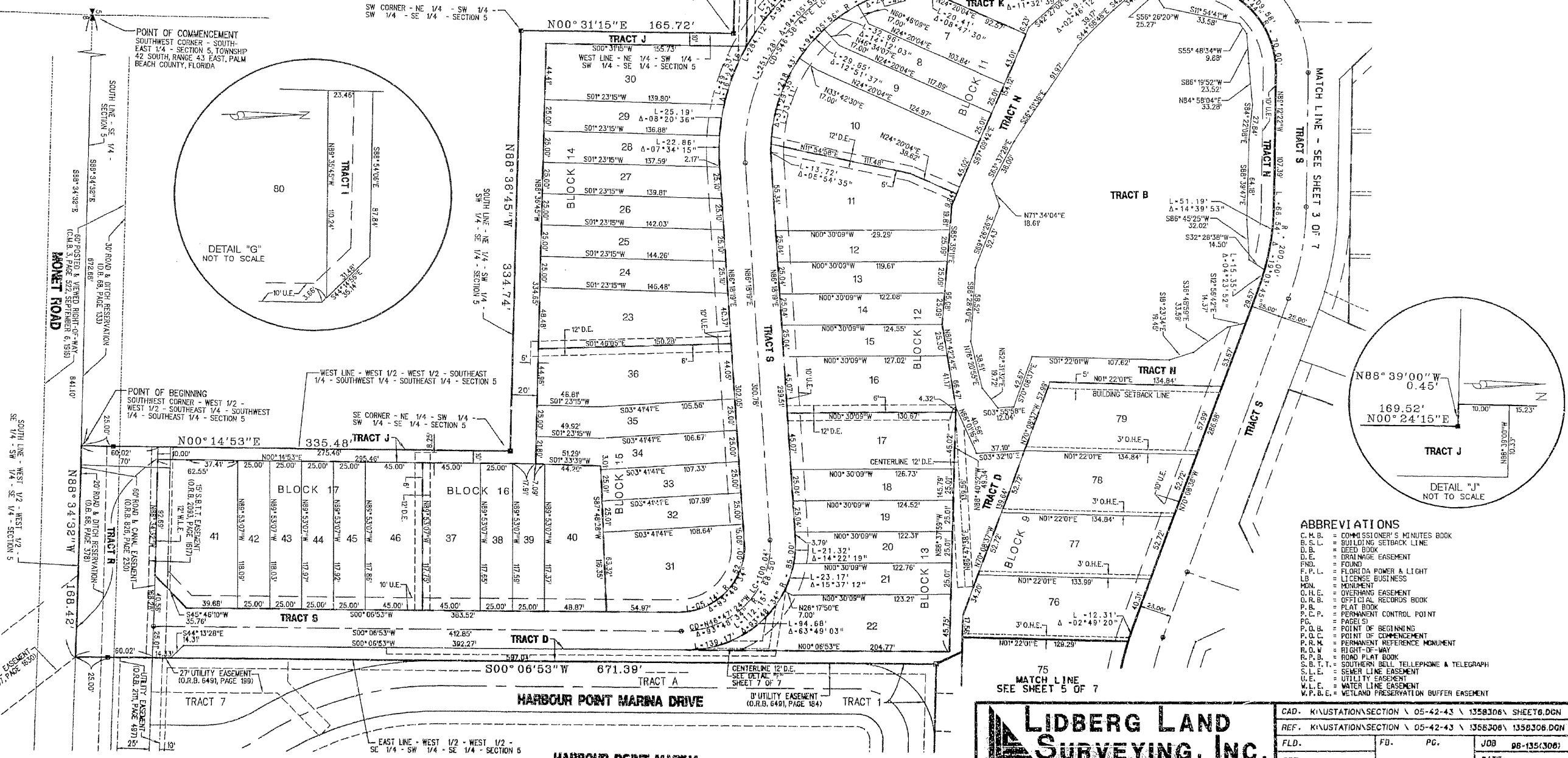
Being a portion of Section 5, Township 42 South, Range 43 East,
Village of North Palm Beach, Palm Beach County, Florida.

Sheet 6 of 7

June 1999



C2	L-44.69'	C1	L-52.96'
A-13°37'12"	R = 188.00'	A-14°18'51"	R = 212.00'
CD-N08°24'21"W	LC-44.58'	CD-S06°03'31"E	LC-52.83'



ABBREVIATIONS

- C.M.B. = COMMISSIONER'S MINUTES BOOK
- B.S.L. = BUILDING SETBACK LINE
- D.B. = DEED BOOK
- D.E. = DRAINAGE EASEMENT
- FND. = FOUND
- F.P.L. = FLORIDA POWER & LIGHT
- L.C.E. = LICENSE BUSINESS
- MON. = MONUMENT
- O.H.E. = OVERHANG EASEMENT
- O.P.B. = OFFICIAL RECORDS BOOK
- P.L.B. = PLAT BOOK
- P.C.P. = PERMANENT CONTROL POINT
- P.G. = PAGE(S)
- P.B. = POINT OF BEGINNING
- P.O.C. = POINT OF COMMENCEMENT
- P.R.M. = PERMANENT REFERENCE MONUMENT
- R.O.W. = RIGHT-OF-WAY
- R.P.B. = ROAD PLAT BOOK
- S.B.T. = SOUTHERN BELL TELEPHONE & TELEGRAPH
- S.L.E. = SEWER LINE EASEMENT
- U.E. = UTILITY EASEMENT
- W.L.E. = WATER LINE EASEMENT
- W.P.B.E. = WETLAND PRESERVATION BUFFER EASEMENT

LIDBERG LAND SURVEYING, INC.
775 West Palm Beach Road, Suite 200
Jupiter, Florida 33488 TEL: 888-748-9444

CAD.	K:\STATION\SECTION \ 05-42-43 \ 1358306\ SHEET6.DGN
REF.	K:\STATION\SECTION \ 05-42-43 \ 1358306\ 1358306.DGN
FLD.	FD. PG. JOB 98-135(306)
OFF. R.W.A.P.	DATE 10/05/99
CKD. D.C.L.	SHEET 6 OF 7 DWG. 98-135P